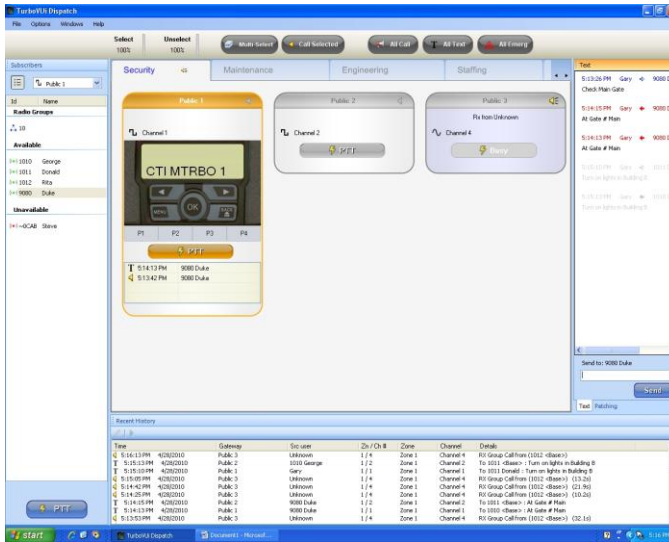




TurboVUi™ Dispatch

Computer Aided Dispatch over IP for MOTOTRBO™ Radios
Version 3.2.x Software

The TurboVUi™ Dispatch system offers a console-type solution for applications requiring connection to many MOTOTRBO radios (control stations) from a single user interface. It is designed with an intuitive user interface to minimize learning time and maximize a User's efficiency. TurboVUi™ Dispatch systems include TurboVUi IP Gateway Hardware, Dispatch Software, and one-time Licensing.



CTI Products, Inc.

1211 West Sharon Road
Cincinnati, Ohio 45240
USA

phone
+1.513.595.5900

fax
+1.513.595.5983

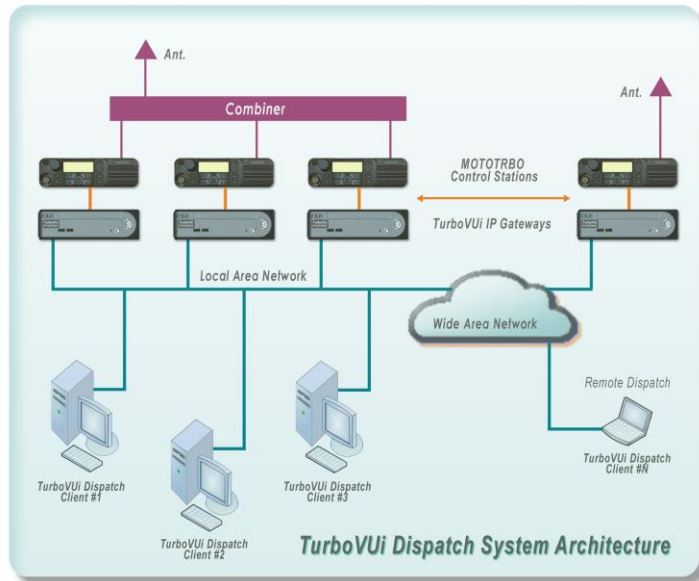
e-mail
info@ctiproducts.com

www.ctiproducts.com

MAJOR SYSTEM FEATURES

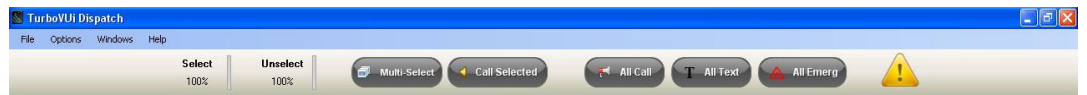
Talk Groups (Channels)		30 Max, per TurboVUi Dispatch Client
Dispatch Clients		8, Max
Select & Unselect Volume		Yes
Cross-Channel Patch	Groups	2, Max
	Subscribers per Patch	2, Max
	Method	Buffered Audio Streams
Multi-Select	Method	Buffered Audio Streams
Texting		Yes
Private Call		Yes
Cross-Mute	Types	Acoustic, RF
Mapping		Yes
Voice & Event Recorder/Logger		Yes
Supported Accessories	Microphone	USB, Analog, Blue Tooth
	Monitor	Touch Screen
	PTT Button	Mouse, USB Desk Mic, USB Footswitch

TURBOVUI DISPATCH SYSTEM ARCHITECTURE



TURBOVUI DISPATCH CLIENT USER INTERFACE

Main Toolbar



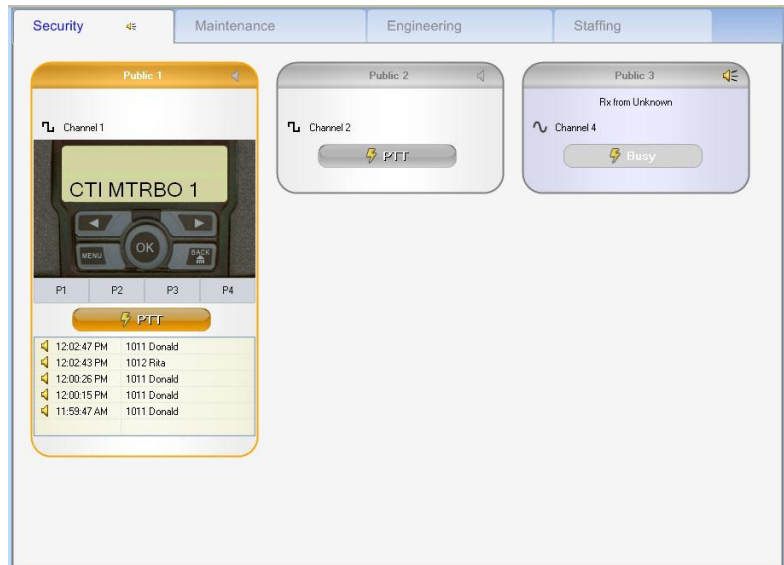
The Main Toolbar includes controls and indicators that are common to all channels.

Indicators/Controls	Tx and Rx level indicators
Select Audio Slider	Adjustable from 0% to 100%, and Mute
Unselect Audio Slider	Adjustable from 0% to 100%, and Mute
Multi-Select button	Selects multiple channels for transmitting
Call-Selected button	PTT button for Selected channels
All Call button	Voice is transmitted across all channels in system
All Text button	Text is transmitted across all channels in system
All Emergency	Emergency tone is activated on each radio in system
Hard Disk Space Alert	Indicates available storage is less than 2 weeks

TURBOVUI DISPATCH CLIENT USER INTERFACE (CONT.)

Channel Pages (tabs)

Channel Pages use tabs to group large numbers of radio channels into manageable subgroups. Each Channel Window within a Channel Page can be customized to show display indicators and controls necessary for that channel or talk group. Status indicators such as Transmit, Receive, and Emergency are shown on both the Tabs and the Channel Windows.



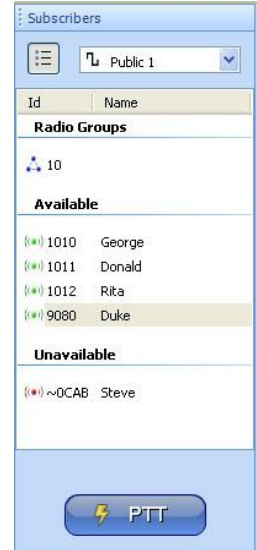
Tab Indicators	Transmit/Receive, Emergency, Call Alert	
Channel Windows	Screen size & resolution dependent	20, Max
Indicators/Controls	System Status	IP Gateway ID IP Gateway Connect indicator Radio Connect indicator
	Call Status	Transmit/Receive/Busy indicator Subscriber ID & Alias Group/Private indicator
	Alerts	Emergency, Call Alert indicators
	Channel	PTT Button Volume Level and Mute controls Recent Events display
	Radio	Alphanumeric Display Function Buttons Zone/Channel Selector

TURBOVUI DISPATCH CLIENT USER INTERFACE (CONT.)

Subscribers Window

The Subscribers Window lists Private radio users as well as Groups of users. The list can be sorted using Radio IDs or Alias Names. When a user is selected from the list, the last-utilized radio channel is indicated in the upper display box. Call Alert and PTT buttons are located at the bottom of this window to allow quick access to a subscriber.

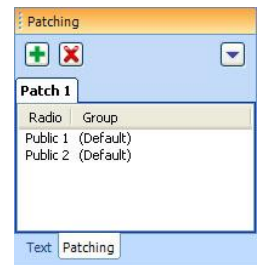
Indicators/Controls	Radio ID & Alias Name List	
	ARS Status	
	PTT Button	
	Last-Utilized Channel	
Features	Call Types	Group or Private
	Sort by	Radio ID or Alias
	Search by	Radio ID or Alias
	Subscriber Control	Edit Alias
		Find Radio
		Call Alert
		Remote Monitor
		Remote Enable/Disable



Patch Window

The Patch Window controls Channel-to-Channel patches. Channels can be drag-and-dropped into a tab on the Patch Window to form a patch group. Patch groups can also be formed from a drop-down list of subscribers.

Features	Groups	2, Max
	Radios per Group	2, Max
	Method	Buffered Audio Streams



Texting Window

The Texting Window condenses texting for all subscribers into one dockable window. Recipients can be chosen from a drop-down list of subscribers. Alternately, a subscriber Radio ID or Alias name can be typed. An outgoing message will indicate if it has reached its destination subscriber radio.



TURBOVUI DISPATCH CLIENT USER INTERFACE (CONT.)

Recent History Window

The Recent History Window displays the previous 50 events that the radio system encounters. These events include audio sound files for both digital and analog channels. It also includes events such as Emergency, Call Alerts, text messages, and system status. Data can be sorted by a variety of fields.

Time	Gateway	Src user	Zn / Ch #	Zone	Channel	Details
5:18:28 PM 4/28/2010	Public 3	Unknown	1 / 4	Zone 1	Channel 4	RX Group Call from (1012 <Base>)
5:17:26 PM 4/28/2010	Public 3	Unknown	1 / 4	Zone 1	Channel 4	RX Group Call from (1012 <Base>) (9.5s)
5:17:10 PM 4/28/2010	Public 3	Unknown	1 / 4	Zone 1	Channel 4	RX Group Call from (1012 <Base>) (8s)
5:16:46 PM 4/28/2010	Public 3	Unknown	1 / 4	Zone 1	Channel 4	RX Group Call from (1012 <Base>) (7s)
5:16:35 PM 4/28/2010	Public 3	Unknown	1 / 4	Zone 1	Channel 4	RX Group Call from (1012 <Base>) (4.2s)
5:16:26 PM 4/28/2010	Public 3	Unknown	1 / 4	Zone 1	Channel 4	RX Group Call from (1012 <Base>) (7.7s)
5:16:19 PM 4/28/2010	Public 3	Unknown	1 / 4	Zone 1	Channel 4	RX Group Call from (1012 <Base>) (6.4s)
5:16:13 PM 4/28/2010	Public 3	Unknown	1 / 4	Zone 1	Channel 4	RX Group Call from (1012 <Base>) (4s)
5:15:13 PM 4/28/2010	Public 2	1010 George	1 / 2	Zone 1	Channel 2	To 1011 <Base> : Turn on lights in Building B

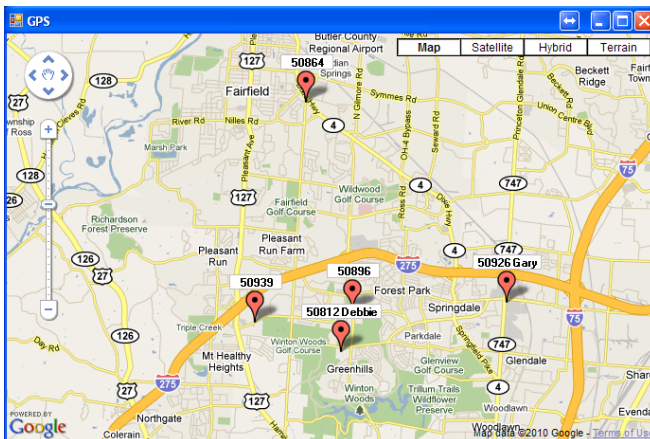
Communications Data Fields	
	Date, Time
	IP Gateway ID & Alias
	Radio Zone & Channel
	Originator Radio ID & Alias
	Destination Radio ID & Alias
	Call Type
	Data for Voice, Text, or Event
	Last Note

Archived History Window

The Archived History Window displays similar information described above for the Recent History Window, but for all events recorded to the hard disk. Filtering tools allow easy selection of data. Filters can be applied for date and time range, event type (voice, text, alert), subscriber, channel, and more.

GPS Map Window

Locations of subscribers can be mapped using Google® Maps. Two polling modes are available; Auto and Static. In Auto Polling mode, all “available” subscriber radios in the system will be mapped. A radio is “available” if recognized by the Automatic Registration Service, or if its PTT or Emergency Key has been pressed recently. In Static Polling mode, a TurboVUI Dispatch user creates a custom polling list of subscribers. In either polling mode, each poll can take up to 30 seconds.



TURBOVUI DISPATCH CLIENT USER INTERFACE (CONT.)

Configuration

Device Management	IP Address, Name, and Status Record Audio Enable Play Audio Enable Text Enable
Dispatch Settings	Main Toolbar Position Color for Select and Unselect Channels
Audio Settings	Microphone Input Source Select/Unselect vs. Left/Right Speaker Alert Sounds Volume Level
Docking Windows	Docking Windows Displayed Position of Docking Windows
Configuration File	Saved on Dispatch PC, Transportable
License Control	Encrypted File and USB Key

PC & Network Requirements

PC Platform	HP dc7900 or Dell Precision T3400	
PC Minimum Specs	Operating System	Windows XP Pro, Vista Business, or 7
	Processor	Intel Core 2 Duo
	Memory	4 G Bytes
	Graphics	Integrated
	Network Connection	Integrated
	Sound	Integrated with external speakers
	1 st Hard Disk	160 G Bytes (for Operating System)
	2 nd Hard Disk	500 G Bytes (for History Logging)
	Network Connection	Integrated
	Note: At normal sampling rate of 8k samples per second, continuous (100% duty) recording of one radio channel for 24 hours will require 1.2G Byte of hard disk space. Normal channel activity ranges from 10% to 60% duty.	
Network Bandwidth	Per connected radio	14k Bytes per Second

Note for History Logging: At normal sampling rate of 8k samples per second, continuous (100% duty) recording of one radio channel for 24 hours will require 1.2G Byte of hard disk space. Normal channel activity ranges from 10% to 60% duty.

TURBOVUI IP GATEWAY

The TurboVUI IP Gateway provides the hardware interface between a MOTOTRBO radio and an IP network. It connects to a MOTOTRBO radio using its rear accessory connector. The ICU (IP Client Utility) provides custom IP configuration for the IP Gateway.

Mechanical	Size	8.25" w x 2.5" h x 11.5" d	
	Weight		3 lbs
Environmental	Temperature	0-50 °C	
	Humidity	10-95% non-condensing	
Electrical	With included power adapter	100 – 240Vac, 2.5A max, 50 – 60 Hz	
	From DC source	11.5 – 12.5Vdc, 2.5A max	
MOTOTRBO Interface	DE-9 Female & USB	Use Cable # S2-61431	
Clients Supported		36 Solo, 8 Dispatch, Included	
Power-On		Auto	
Network Bandwidth	Per Client	14k Bytes per Second	
IP Port Forwarding	Default Port	48222, Configurable	

ORDERING INFORMATION

S2-61528	TurboVUI IP Gateway
S2-61506	TurboVUI Dispatch Software
S2-61507	TurboVUI Dispatch Connection Licenses
Accessories	See Quotation Tool for complete list

Notes

MOTOTRBO Control Station (XPR 4550) should be supplied by Dealer. Console PC, microphone, PTT accessories, and stereo speakers should be supplied by Dealer or End-User.

