

# RadioPro™ IP Gateway



## Radio-over-IP Solutions for PCs and iOS™/Android™

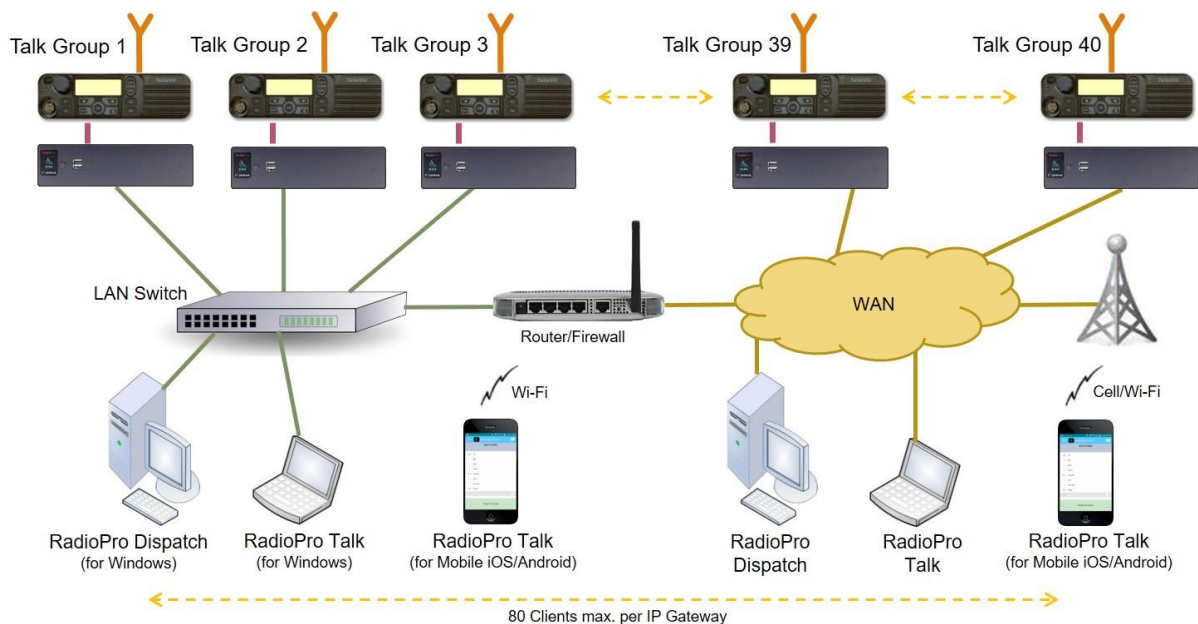
RadioPro™ products offer best-in-class RoIP and DoIP (Dispatch over IP) solutions for 2-way radio systems, such as Motorola MOTOTRBO™ or Kenwood NEXEDGE®. They allow communications from anywhere using PC Windows® or iOS/Android mobile platforms. RadioPro™ products combine flexibility to solve any Radio-over-IP challenge, ease of system deployment, and cost savings over other solutions. RadioPro™ systems can provide Voice, GPS/AVL, Text Messaging, Logging, and Telemetry in a single solution.



The RadioPro™ IP Gateway interfaces a control station radio to an IP network for easy wide-area deployment without purchasing and configuring server PCs. It provides full functionality when connected to Motorola MOTOTRBO or Kenwood NEXEDGE radio systems.



As shown in the diagram below, a RadioPro system may have a mixture of client types; Dispatch, Talk, and Mobile.



# RadioPro™ IP Gateway

| Specifications                         |   |
|--|---|
| <b>Mechanical and Environmental</b>    |   |
| Dimensions & Weight                    | 8.25" w x 2.5" h x 11.5" d, 3 lbs.                              |
| Temperature & Humidity                 | 0-50 degrees C, 10-95% non-condensing                           |
| <b>Electrical</b>                      |   |
| AC Input (with included power adapter) | 100-240Vac, 200mA max, 50-60Hz                                  |
| DC Input                               | 11.5 – 12.5 VDC, 2A max   |
| <b>Miscellaneous</b>                   |   |
| Motorola MOTOTRBO XPR4k/5k Interface   | DE-9 female (analog Tx/Rx), USB (data). Use cable S2-61431.     |
| Kenwood NEXEDGE NX700/800 Interface    | DB-25 female. Use cable S2-61769.                               |
| Kenwood NEXEDGE NX720/820 Interface    | DA-15 female. Use cable S2-61890.                               |
| Kenwood NEXEDGE NX5700/5800 Interface  | DB-25 female. Use cable S2-61769.                               |
| Tx/Rx Impedance                        | 600 ohms  |
| Maximum Clients Supported              | 80  |
| Power-on                               | Auto  |
| Network Bandwidth                      | 2.2kBytes/s with audio compression enabled (22kBytes/s without) |
| Port Forwarding (for firewall/router)  | Configurable, default port is TCP Port 48222                    |
| Warranty                               | 2 Years   |

| Ordering Information for Control Station Interface  |  |
|---|--|
| S2-61815  | RadioPro™ IP Gateway Kit for Control Station<br>Includes power supply.<br>One required for each talk group (control station interface) . |
| <b>Interface Cables</b>   |  |
| S2-61431  | RadioPro™ Interface Cable for Motorola MOTOTRBO XPR4550/XPR5550 radio  |
| S2-61769  | RadioPro™ Interface Cable for Kenwood NEXEDGE NX-700/800 and NX-5700/5800 radio  |
| S2-61890  | RadioPro™ Interface Cable for Kenwood NEXEDGE NX-720/820 radio   |
| <b>License for Solo, Talk, or Talk for Mobile users (number of simultaneous user connections)</b> |  |
| S2-61480-005  | 5-pack License for Solo, Talk, and Talk for Mobile users   |
| S2-61480-010  | 10-pack License for Solo, Talk, and Talk for Mobile users  |
| S2-61480-020  | 20-pack License for Solo, Talk, and Talk for Mobile users  |
| S2-61480-040  | 40-pack License for Solo, Talk, and Talk for Mobile users  |
| S2-61480-080  | 80-pack License for Solo, Talk, and Talk for Mobile users  |
| <b>Gateway Options</b>  |  |
| S2-61850  | RTP Transfer Option for Eventide recorders: transfers voice, text, & GPS data using RTP  |
| S2-61851  | MultiSpeak Transfer Option for 3 <sup>rd</sup> party utility outage software: transfers GPS data   |
| S2-61852  | Persistent Patch Option: no other software is required to patch 2 to 5 channels  |
| S2-61887  | GPS Locate Option for Talk Mobile App (for iOS and Android devices)  |

## Notes

Motorola XPR4550/5550 or Kenwood NX-700/800/720/820/5700/5800 control station radio should be supplied by radio dealer.

Dispatch console PC, microphone, PTT accessories, and desk speakers should be supplied by dealer or end-user.

Product options and specifications are subject to change without notice.



CTI Products, Inc. [www.ctiproducts.com](http://www.ctiproducts.com) [sales@ctiproducts.com](mailto:sales@ctiproducts.com) +1 513-595-5900

RadioPro, RadioPro Dispatch, RadioPro Talk and RadioPro Solo are trademarks of CTI Products, Inc.  
MOTOROLA, MOTO, MOTOROLA SOLUTIONS, and the Stylized M Logo are registered trademarks of Motorola Trademark Holdings, LLC and are used under license.  
All other trademarks are the property of their respective owners.

5/16/2018