

RadioPro IP Gateway



Radio-over-IP Solutions for PCs and iOS™/Android™

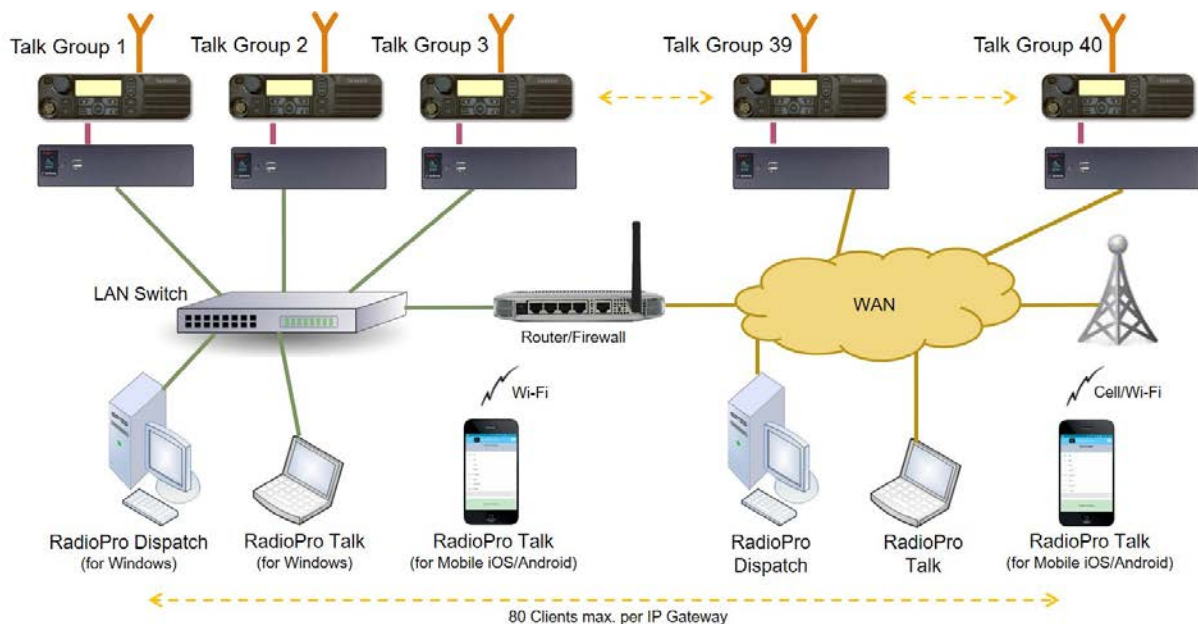
RadioPro offers best-in-class RoIP and DoIP (Dispatch over IP) solutions for 2-way radio systems, such as Motorola MOTOTRBO™ or Kenwood NEXEDGE®. It allows communications from anywhere using PC Windows® or iOS/Android mobile platforms. RadioPro combines flexibility to solve any Radio-over-IP challenge, ease of system deployment, and cost savings over other solutions. RadioPro systems can provide Voice, GPS/AVL, Text Messaging, Logging, and Telemetry in a single solution.



The RadioPro IP Gateway interfaces a control station radio to an IP network for easy wide-area deployment without purchasing and configuring server PCs. It provides full functionality when connected to Motorola MOTOTRBO or Kenwood NEXEDGE radio systems. When connected to other radio types, it provides basic talk and listen.



As shown in the diagram below, a RadioPro system may have a mixture of client types; Dispatch, Talk, and Mobile.



RadioPro IP Gateway

Specifications	
Mechanical and Environmental	
Dimensions & Weight	8.25" w x 2.5" h x 11.5" d, 3 lbs.
Temperature & Humidity	0-50 degrees C, 10-95% non-condensing
Electrical	
AC Input (with included power adapter)	100-240Vac, 200mA max, 50-60Hz
DC Input	12-32Vdc, 2A max
Miscellaneous	
Motorola MOTOTRBO XPR4k/5k Interface	DE-9 female (analog Tx/Rx), USB (data). Use cable S2-61431.
Kenwood NEXEDGE NX700/800 Interface	DB-25 female. Use cable S2-61769.
Basic Rx/Tx Interface	DE-9 female (analog Tx/Rx, PTT digital output to radio, Carrier Sense digital input from radio). Use cable 89-12109.
Tx/Rx Impedance	600 ohms
Maximum Clients Supported	80 Talk or Mobile, 20 Dispatch
Power-on	Auto
Network Bandwidth	2.2kBytes/s with audio compression enabled (22kBytes/s without)
Port Forwarding (for firewall/router)	Configurable, default port is TCP Port 48222
Warranty	2 Years

Ordering Information for Control Station Interface	
S2-61815	RadioPro IP Gateway Kit for Control Station or Repeater interface Includes power supply. One required for each talk group (control station interface) .
Interface Cables (others available on request)	
S2-61431	RadioPro Interface Cable for Motorola MOTOTRBO XPR4550/XPR5550 radio
S2-61769	RadioPro Interface Cable for Kenwood NEXEDGE NX-700 and NX-800 radio
89-12109	RadioPro Interface Cable for generic radio with basic talk/listen only Compatible with radios with Tx/Rx audio signals, PTT digital input, and Carrier Sense digital output.
License for Solo, Talk, or Talk for Mobile users (number of simultaneous user connections)	
S2-61480-005	5-pack License for Solo, Talk, and Talk for Mobile users
S2-61480-010	10-pack License for Solo, Talk, and Talk for Mobile users
S2-61480-020	20-pack License for Solo, Talk, and Talk for Mobile users
S2-61480-040	40-pack License for Solo, Talk, and Talk for Mobile users
S2-61480-080	80-pack License for Solo, Talk, and Talk for Mobile users
Gateway Options	
S2-61850	RTP Transfer Option for Eventide recorders: transfers voice, text, & GPS data using RTP
S2-61851	MultiSpeak Transfer Option for 3 rd party utility outage software: transfers GPS data
S2-61852	Persistent Patch Option: no other software is required to patch 2 to 5 channels
S-61887	GPS Locate Option for Talk Mobile App (for iOS and Android devices)

Notes

Motorola XPR4550/5550 or Kenwood NX-700/800/5700/5800 control station radio should be supplied by radio dealer.

Dispatch console PC, microphone, PTT accessories, and desk speakers should be supplied by dealer or end-user.

